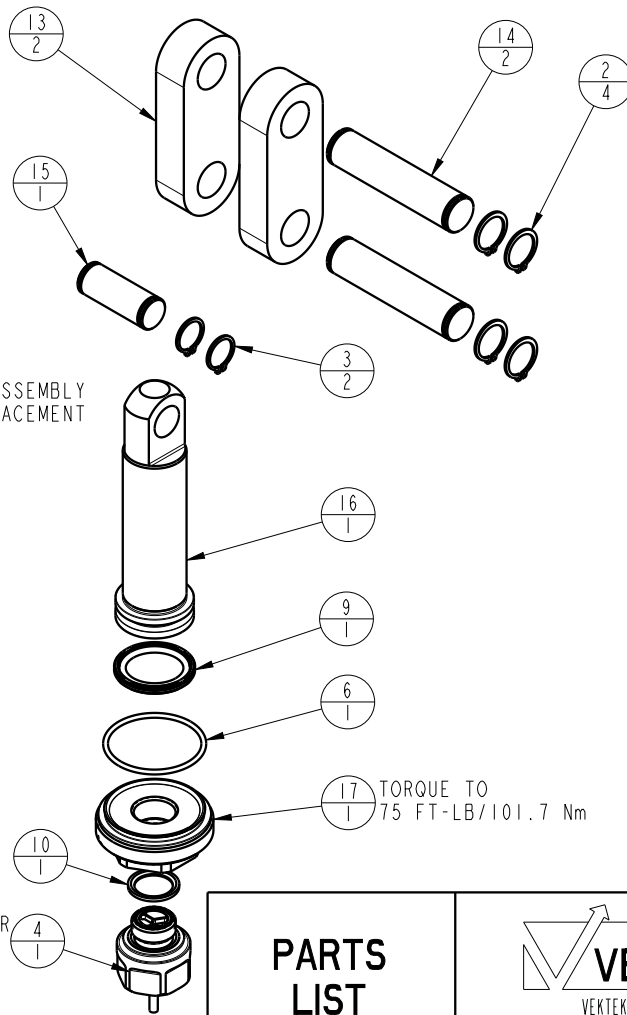
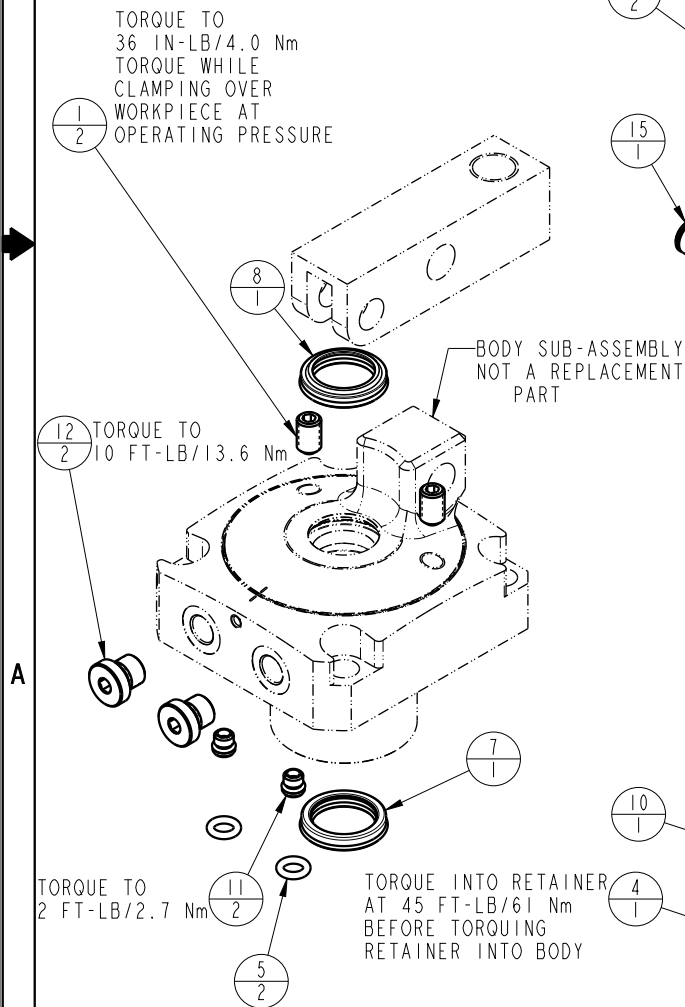


NO	QTY	PART NO	DESCRIPTION	STD SEAL KIT
1	2	21500331	SCREW, SET, CUP PT, M10 X 1.5 X 16	
2	4	23050024	RING, RTNG, EXT, 0.625	X
3	2	23050048	RING, RTNG, EXT, 0.551	X
4	1	29740200	SENSOR, ULTRASONIC, M12, 1m	
5	2	39051088	O-RING, (8mm X 3)	X
6	1	39051153	O-RING, (38mm X 2)	X
7	1	39052063	SEAL, ROD, RSD, 26, 85A, AU	X
8	1	39053044	SEAL, WIPER, SNAP IN, WED, 26, 94A, AU	X
9	1	39056012	SEAL, CAP, PISTON, 32, 94A, AU	X
10	1	43000040	O-RING, DIN3869, M18	
11	2	43061122	PLUG, SOCH, METRIC, M8	
12	2	43068006	PLUG, PORT, HOLLOW HEX, G1/4	
13	2	81600171	LINK, LC, TL360, 5000/22.3kN	
14	2	81600172	PIN, LINK, LC, TL360, 5000/22.3kN	
15	1	81600173	PIN, PLUNGER, LC, TL360, 5000/22.3kN	
16	1	81600255	PLUNGER, LC, TL360, DA, 5000/22.3kN	
17	1	81600333	CAP, LC, TL360, 5000/22.3kN, US	
N/A	N/A	60160505	KIT, SEAL, ASSY, LC, TL360, DA, 22.3kN	NOTED



PARTS LIST



VEKTEK, INC.
1334 E. SIXTH AVE. P.O. BOX 625
EMPORIA, KS. 66801 U.S.A.

ASSEMBLIES AFFECTED
41623200US

PARTS LIST, ASSY, LC, TL360, DA, 22.3kN, US

SIZE
A

MPL1639

REV
A

SHEET 1 OF 1

FORM FEG035_PL_ASIZE, REV. B

A	5660	RELEASE	ALS	3/24/25
REV	IN ACCORDANCE WITH ECN	EFFECTIVE DATE	REVISED BY	DATE
DRW BY:	ALS	DRAWING STATUS: Released		
DATE:	3/21/25	PRODUCTION APPROVED FOR RELEASED STATUS ONLY		